

DURACELL®

Heavy-Duty Commercial

Heavy Power • Trusted Performance

Duracell Commercial batteries have the high cranking performance that brings even the toughest engines to life.

Heavy-duty power from a name trusted to deliver the day-in and day-out dependability critical for commercial truck and equipment use. They also have the cycling service capabilities to handle the demanding needs for reserve and accessory power.

A durability enhanced construction and special features, like the secure anchor-bonding of the power producing components, prevent vibration damage to protect the battery's superior performance and life.

Commercial vehicle or equipment owners shouldn't settle for anything less than Duracell's trusted service and heavy duty starting power.

TRUST IS POWER.

Visit www.driveduracell.com to see the entire line of battery solutions for any application need.



Duracell Heavy-Duty Commercial Batteries

GROUP NO.	PART NO.	PERFORMANCE LEVEL			FREE REPLACEMENT WARRANTY	MAXIMUM OVERALL DIMENSIONS						FOOTNOTES
		CCA @ 0°F	REF. CA.	R.C.		LENGTH		WIDTH		HEIGHT		
						INCH	MM	INCH	MM	INCH	MM	
6-VOLT DURACELL® HEAVY-DUTY COMMERCIAL												
1	HP1	640	785	130	12 MONTHS	9	229	6 7/8	175	8 3/4	222	21,25,S
12-VOLT DURACELL® HEAVY-DUTY COMMERCIAL												
30H	D30H	650	800	150	12 MONTHS	13	330	6 3/4	171	9 1/2	241	19,21,22,S
31	HP31	1000	1230	185	18 MONTHS	13	330	6 3/4	171	9 1/2	241	17,19,21,22,X
31	D31X	950	1170	175	18 MONTHS	13	330	6 3/4	171	9 1/2	241	17,19,21,22,X
31	D31	760	935	170	18 MONTHS	13	330	6 3/4	171	9 1/2	241	17,19,21,22,X
31P	HP31P	1000	1230	185	18 MONTHS	13	330	6 3/4	171	9 1/2	241	17,19,21,22,S
31P	D31PX	950	1170	175	18 MONTHS	13	330	6 3/4	171	9 1/2	241	17,19,21,22,S
31P	D31P	760	935	170	18 MONTHS	13	330	6 3/4	171	9 1/2	241	17,19,21,22,S
4D	HP4D	1050	1290	290	12 MONTHS	20-1/2	520	8-5/8	219	9-7/8	251	12,17,21,22,S
4DLT	HP4DLT	850	1045	240	12 MONTHS	20	508	8 1/8	206	8 1/8	206	12,19,25,S
8D	HP8DFT	1425	1755	440	12 MONTHS	20 3/4	527	11	279	10	254	12,17,21,22,S
12-VOLT DURACELL® HEAVY-DUTY CYCLE SERVICE												
31	HP31CS	730	900	190	18 MONTHS	13	330	6 3/4	171	9 1/2	241	17,19,21,22,43,X
31	D31CS	700	860	185	18 MONTHS	13	330	6 3/4	171	9 1/2	241	17,19,21,22,43,X

FOOTNOTES

Batteries are maintenance-free calcium grids, except where noted

Batteries manufactured in black polypropylene cases & covers

CA is a reference rating, for comparison only
CCA and RC conform to B.C.I. specifications

12. Hybrid construction

17. Includes handle

19. Includes lifting ledges

21. Anchor locked elements

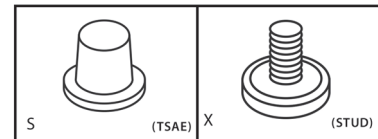
22. Flush manifold vented cover

25. With individual vent caps

43. Free replacement warranty is 12 months in deep-cycle use and 3 months in full electric vehicle use

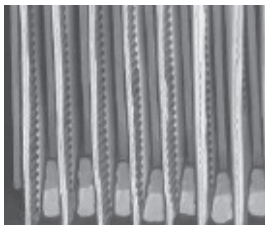
S. SAE "automotive type" post (TSAE)

X. 3/8" x 16 stainless steel stud posts

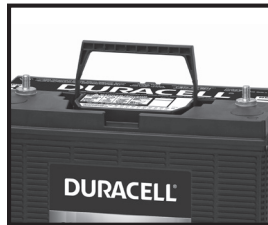


HEAVY-DUTY COMMERCIAL POWER

- High engine cranking performance – up to 1425 cold cranking amps
- Popular group 31 size fits a vast majority of applications
- Dependable reserve and accessory power
- Rugged vibration resistant construction
- Longer, maintenance-free operation from demineralized electrolyte



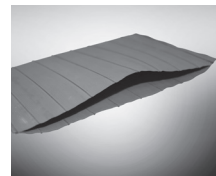
Power producing components are securely anchor-bonded to the case to protect against vibration damage on all group 31's.



Convenient handles or lifting ledges, on most models, significantly enhance transportation and installation of heavy-duty commercial batteries.

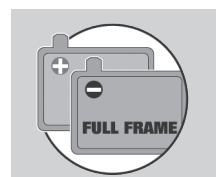
Extended Life Systems

- Special separators prevent life-robbing electrical shorts
- Protects power producing components



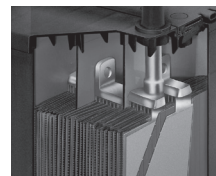
Optimized Full-Frame Plates

- Better withstands severe service demands
- Optimizes current transfer



Enhanced Durability Designs

- Fortified current carrying components resist vibration
- Maximizes performance throughout battery life



PROPOSITION 65 WARNING: Battery posts, terminals and related accessories contain lead and lead compounds, chemicals known to the State of California to cause cancer and reproductive harm. Batteries also contain other chemicals known to the State of California to cause cancer. WASH HANDS AFTER HANDLING.



East Penn Manufacturing Co. • Lyon Station, PA 19536-0147

Phone: 610-682-6361 • Fax: 610-682-4781 • www.DriveDURACELL.com

All data subject to change without notice. No part of this document may be copied or reproduced, electronically or mechanically, without written permission from the company.