

DURACELL®



Heavy Duty Commercial

- Heavy Power • Trusted Performance

Duracell Commercial batteries have the high cranking performance that brings even the toughest engines to life.

Heavy duty power from a name trusted to deliver the day-in and day-out dependability critical for commercial truck and equipment use. They also have the cycling service capabilities to handle the demanding needs for reserve and accessory power.

A durability enhanced construction and special features, like the secure anchor-bonding of the power producing components, prevent vibration damage to protect the battery's superior performance and life.

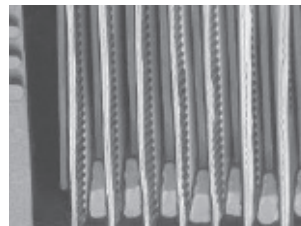
Commercial vehicle or equipment owners shouldn't settle for anything less than Duracell's trusted service and heavy duty starting power.



For product line and specifications visit www.driveduracell.com.

HEAVY DUTY COMMERCIAL POWER

- High engine cranking performance – up to 1425 cold cranking amps
- Popular group 31 size fits a vast majority of applications
- Dependable reserve and accessory power
- Rugged vibration resistant construction
- Longer, maintenance-free operation from demineralized electrolyte



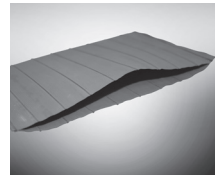
Power producing components are securely anchor-bonded to the case to protect against vibration damage on all group 31's.



Convenient handles or lifting ledges, on most models, significantly enhance transportation and installation of heavy duty commercial batteries.

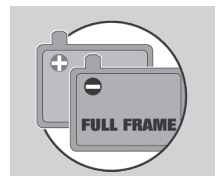
Extended Life Systems

- Special separators prevent life-robbing electrical shorts
- Protects power producing components



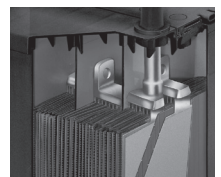
Optimized Full-Frame Plates

- Better withstands severe service demands
- Optimizes current transfer



Enhanced Durability Designs

- Fortified current carrying components resist vibration
- Maximizes performance throughout battery life



PROPOSITION 65 WARNING: Battery posts, terminals and related accessories contain lead and lead compounds, chemicals known to the State of California to cause cancer and reproductive harm. Batteries also contain other chemicals known to the State of California to cause cancer. **WASH HANDS AFTER HANDLING.**



East Penn Manufacturing Co. • Lyon Station, PA 19536-0147
Phone: 610-682-6361 • Fax: 610-682-4781 • www.DriveDURACELL.com
All data subject to change without notice. No part of this document may be copied or reproduced, electronically or mechanically, without written permission from the company.